

Wanesy™ SPN (Small Private Network)

“One box” solution for the IoT*
(*IoT = Internet of Things)

Installed on the Wirnet™ iFemtoCell, iFemtoCell-evolution, or iStation, the Wanesy™ SPN offers a “One box” solution to quickly & easily collect and expose your IoT* data to your Business application. Specially designed for Small Private Networks, smart building, smart agriculture ... the Wanesy™ SPN is the perfect solution to simplify your deployment.

Key features

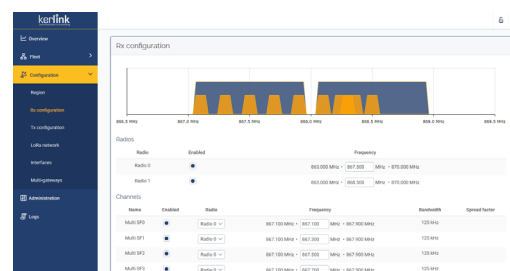
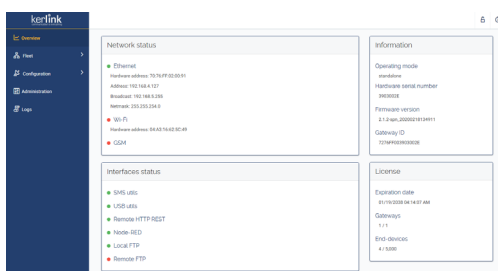
- **Data available locally:** embedded LNS (LoRaWAN™ Network Server) to collect and expose the LoRaWAN™ data of your Kerlink Wirnet™ Gateways.
- **0-touch deployment with Prestaging.**
- **Evolutive architecture:**
 - **Mono-gateway** for Wirnet™ iFemtoCell, iFemtoCell-evolution, iStation
 - **or multi-gateway** collecting data from Wirnet™ iFemtoCell, iFemtoCell-evolution, iStation, Station or iBTS to expose on a Wirnet™ iFemtoCell, iFemtoCell-evolution or iStation.
- **Edge-computing ready:** Open Linux environment, Node-RED compliant, in-house SW compliant.
- **High performance, Security, reliability & robustness:** Quality Management System certified ISO9001: 2015 by AFNOR certification, with permanent implementation of progress.



Smart Building



Smart Agriculture & Environment



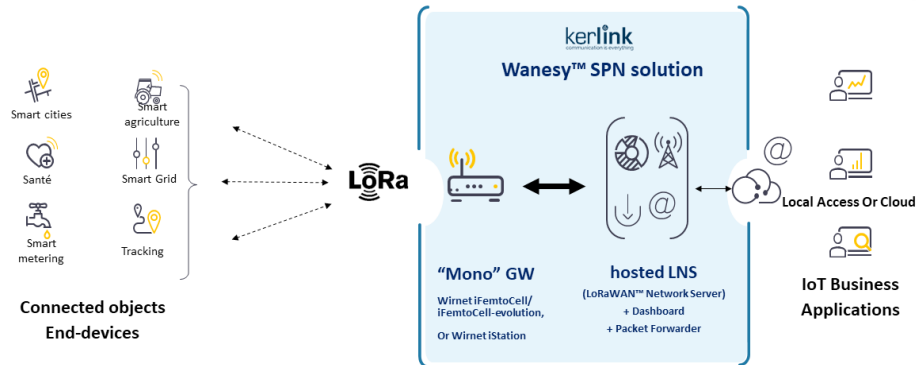
Technical Features

- **Supported ISM bands:** EU868, US915, AU923 (according HW capabilities)
- **Easy supervision:** End-devices status, received data, sent data Gateway status (Gw by Gw management, no centralized management from the Master Gateway), Network status, Interface status
- **Easy provisioning:** massive import of your LoRaWAN™ end-devices and sensors
- **LoRaWAN™ Radio management** (Region, Rx, Tx configuration)
- **Backhaul configuration**
- **Gw administration** (upgrade, ...)
- **Web services, HTTPS REST API, Local FTP server, Remote SFTP access, SMS, USB flash drive**
- **Save and restore configuration**
- **Friendly and Dynamic web interface** (On-the fly modifications),
- **Logs**
- **Lifetime license**

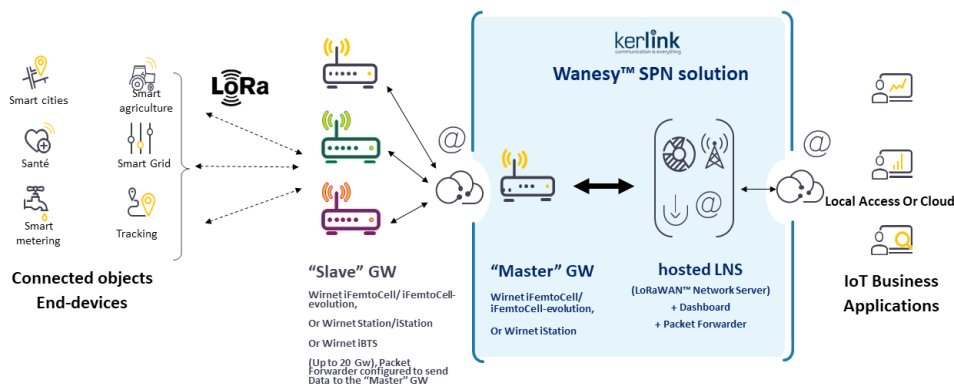
All product specifications are subject to change without notice

Wanesy™ SPN (Small Private Network)

Mono-Gateway architecture



Multi-Gateway architecture



Value-added Services:

- Free access to Kerlink Wiki for customers
- Plug & Play installation (option),
- Maintenance Services (option),
- Kerlink Project Management: Kerlink supports you throughout your project by responding to your specific needs through its service offering and network of specialist integrators available worldwide (option).

Thanks to their expertise and experience, Kerlink teams are fully mobilized to help you develop your business and reduce your operational and commercial risks.

Don't hesitate to contact us:



AdriNet

AdriNet d.o.o. p. +385 1 888 6884
 Jarušiča 9a f. +385 1 8001 151
 10000 Zagreb adrinet@adrinet.hr
 Croatia www.adrinet.hr